

Fig 1. Invasive Cancer of the Uterine Cervix
Registrations in women under 50, England
Data from Office of National Statistics

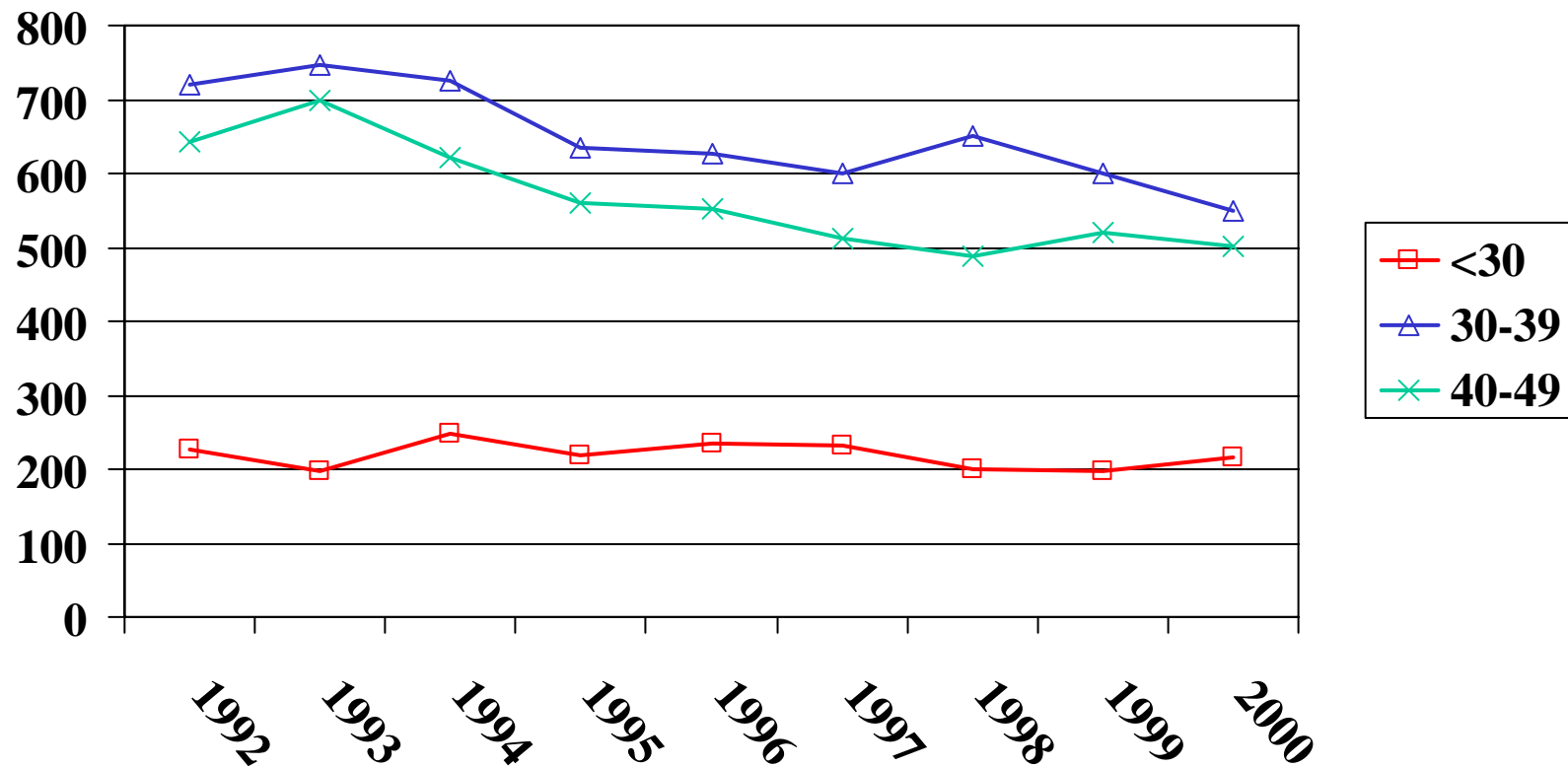
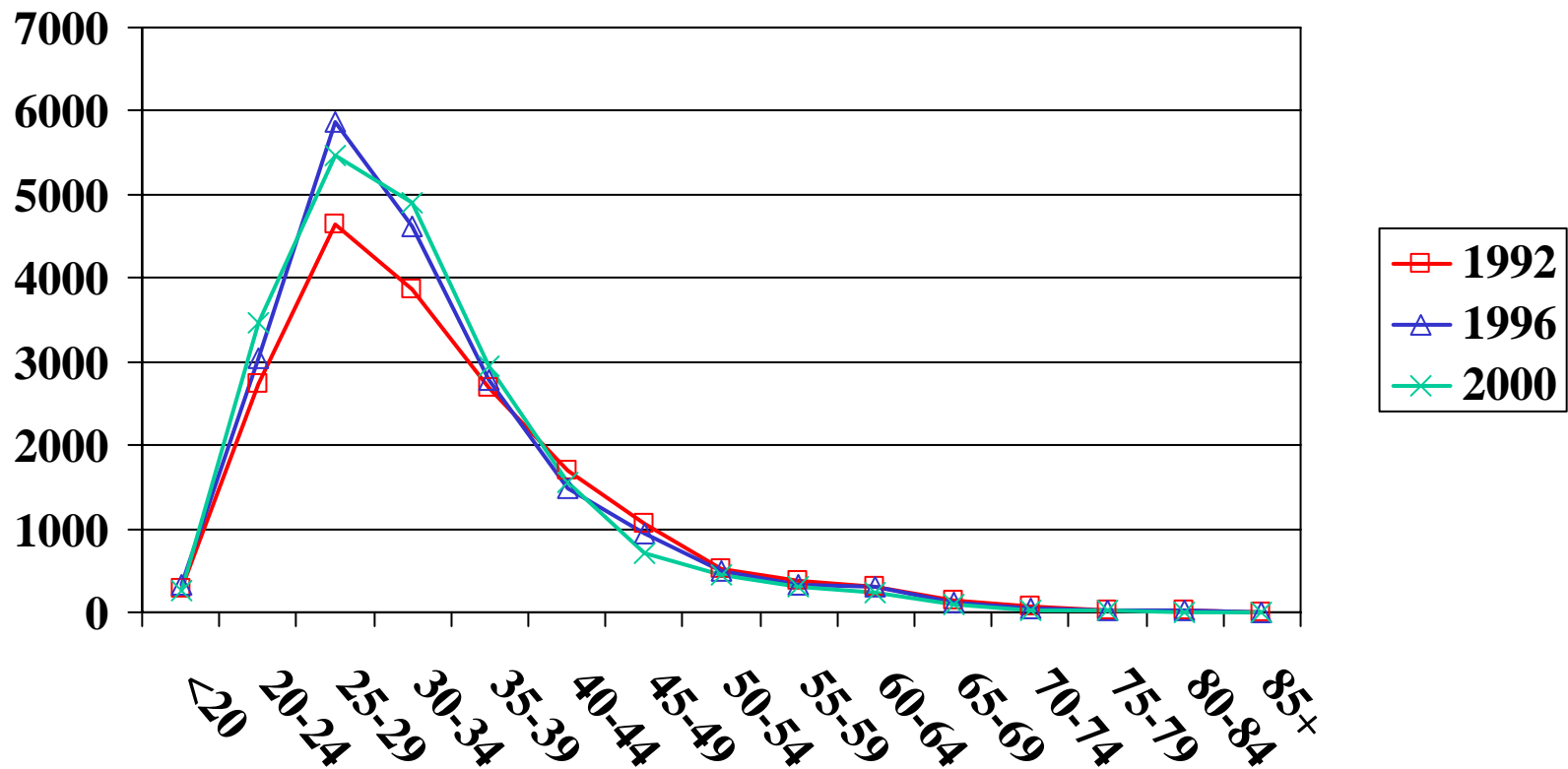


Fig 2. Carcinoma in-situ of the Uterine Cervix Registrations 1992 - 2000, England
Data from Office of National Statistics



**Fig 3. Invasive Cancer of the Uterine Cervix
Incidence 1992 - 2000, England**
Data from Office of National Statistics

